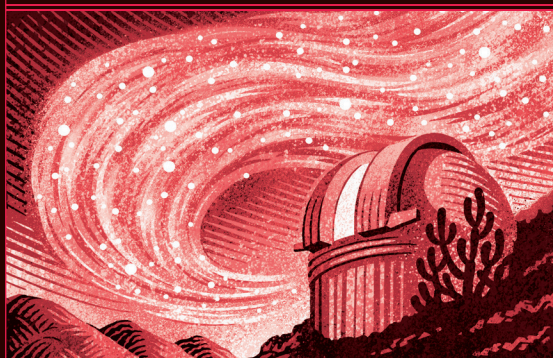


MAYU

AT THE NORTHERN EDGE OF CHILE LIES THE ELQUI VALLEY, A PLACE OF BRIGHT DAYS AND COLD NIGHTS. IT'S PERFECT FOR GROWING GRAPES AND GAZING AT WHAT THE INCAS CALLED MAYU – THE RIVER OF STARS IN THE MILKY WAY. FOR THIS REASON, YOU WILL SEE EIGHT OBSERVATORIES HERE, ALL STUDYING THE HEAVENS.



CARMÉNÈRE-SYRAH